



HAMILTON COUNTY  
**PUBLIC HEALTH**

Visit us online at [www.HCPH.org](http://www.HCPH.org)

Find us on Social Media @HamCoHealth

# Construction and Demolition Debris Landfills

Presented by:

Greg Kesterman, Assistant Health Commissioner

Chuck DeJonckheere, Waste Management Division



HAMILTON COUNTY  
**PUBLIC HEALTH**

Mission: Hamilton County Public Health educates, serves and protects our community for a healthier future.

---

Vision: Healthy choices. Healthy lives.  
Healthy communities.

# Doing Business With HCPH

---

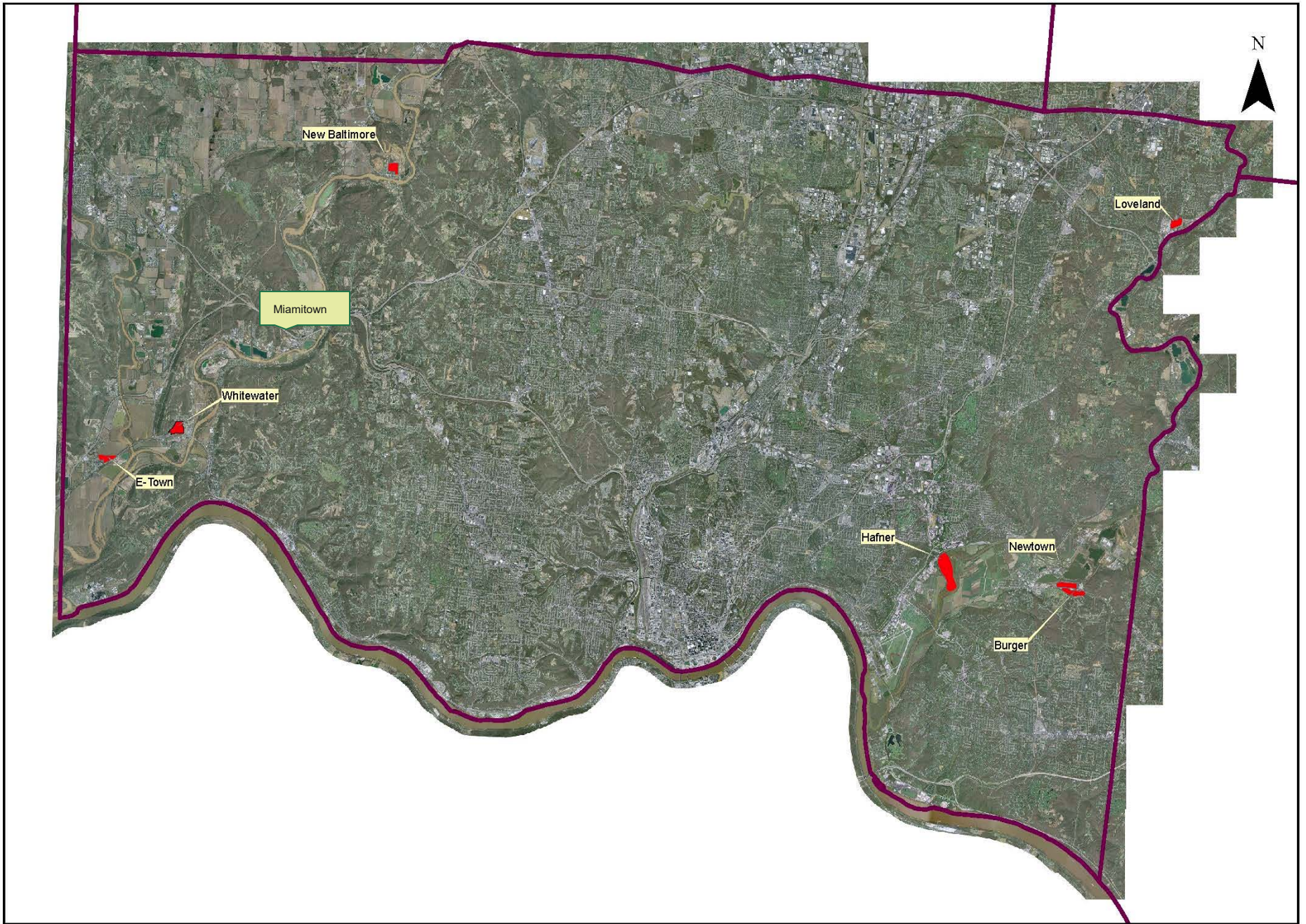
Complete online accessibility:

- Birth certificates
- Death certificates
- Our most-accessed permits & licenses
- Health & inspection reports
- Public health nuisances

# Construction and Demolition Debris (C&DD)

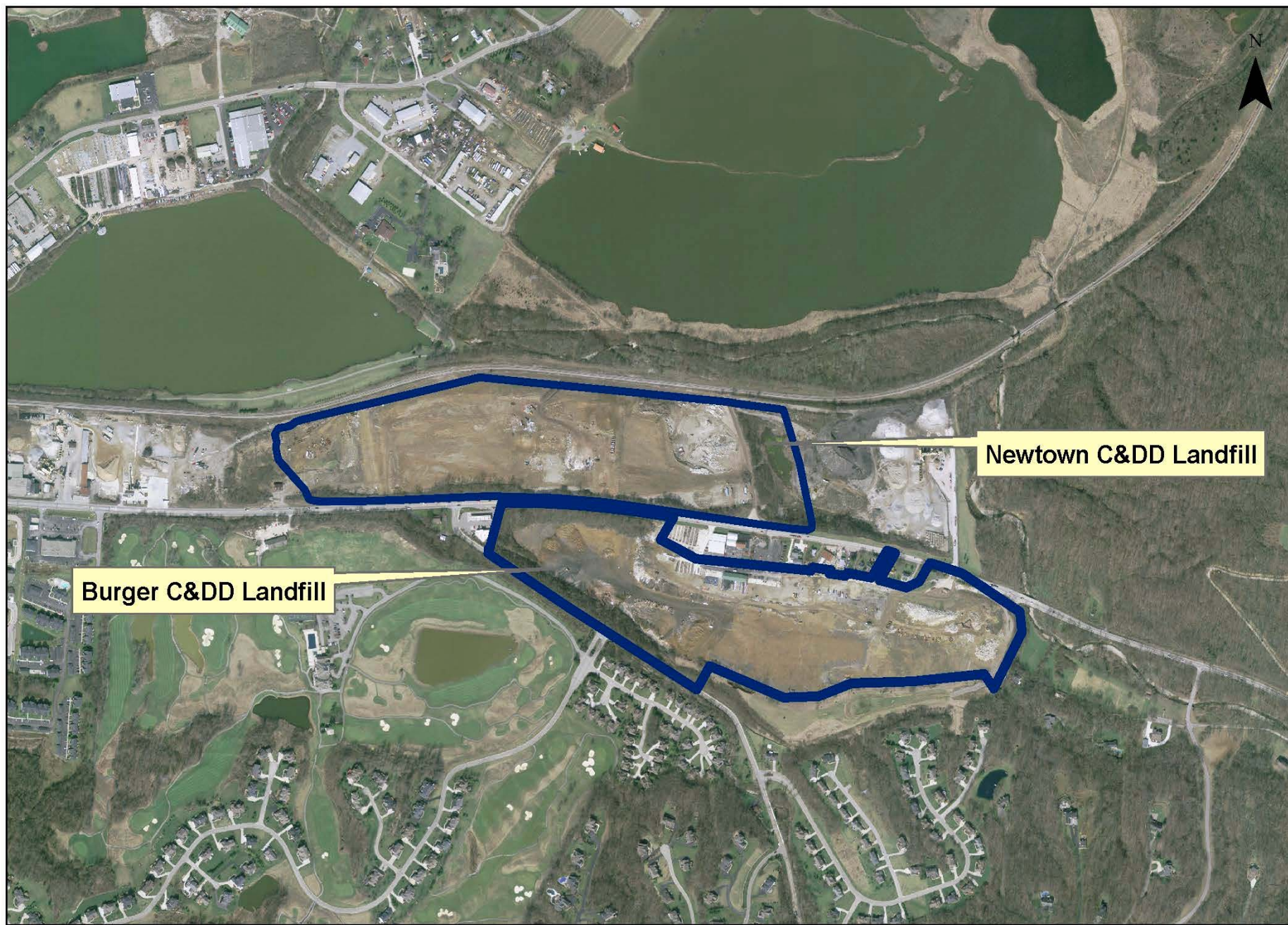






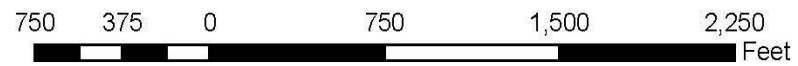
0 7,500 15,000 30,000 45,000 60,000 Feet





Burger C&DD Landfill

Newtown C&DD Landfill



# Host Fee

Year	Burger	Newtown	Total
2005	\$5,997	\$11,435	\$17,433
2006	\$8,140	\$12,564	\$20,704
2007	\$6,215	\$11,728	\$17,943
2008	\$5,444	\$12,665	\$18,110
2009	\$6,089	\$9,314	\$15,403
2010	\$6,739	\$10,555	\$17,295
2011	\$4,007	\$13,937	\$17,944
2012	\$5,233	\$8,361	\$13,594
2013	\$5,865	\$3,837	\$9,703
2014	\$1,825	\$5,709	\$7,534
2015	\$0	\$6,622	\$6,622
2016	\$0	\$9,059	\$9,059
2017	\$0	\$14,916	\$14,916
2018	\$0	\$12,578	\$12,578
<b>Grand Total</b>	<b>\$55,554</b>	<b>\$143,280</b>	<b>\$198,834</b>



# Operational Requirements





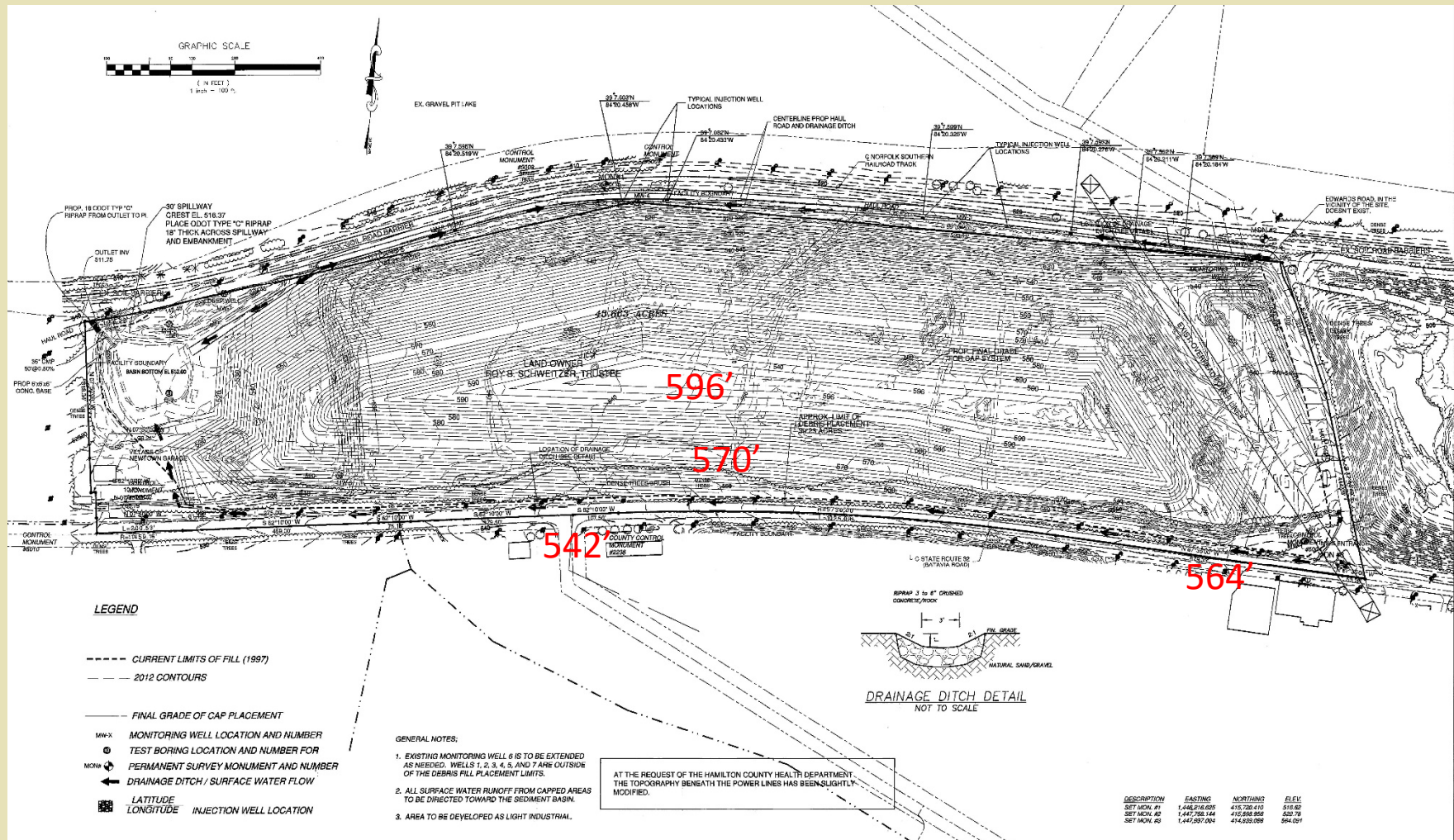
# Mud and Dust







# Newtown Landfill Final Cap Elevation



# Clay Cap





# Dense Vegetative Growth







HAMILTON COUNTY  
**PUBLIC HEALTH**



Questions ???

Visit us online at [www.HCPH.org](http://www.HCPH.org)

Find us on Social Media @HamCoHealth

Complaints 946-7879